

CE-001/2026 – EDITAL DE MATRÍCULAS 2026

CORE-E INTERNATIONAL SCHOOL ENROLLMENT ANNOUNCEMENT FOR THE 2026 ACADEMIC YEAR

By means of this Announcement, the administration of CORE-E INTERNATIONAL SCHOOL establishes the enrollment criteria for the academic year 2026 in the Basic Educational program of the International School of Joinville, with classes scheduled to commence in February 2026.

I. INTRODUCTION

1.1. CORE-E is committed to fostering lifelong learning, holistic development, and global citizenship.

1.2. The school offers Early Years programs for children starting from 4 months old, as well as Elementary School, Middle School, and Upper School. Half-day options are available for Kinder 1 and Kinder 2, with both morning and afternoon sessions. Kinder 3 and Kinder 4 offer morning sessions, while Kinder 5 has a semi-full-day option that includes all mornings and two afternoons, following the school schedule.

1.3. Coree International School offers classes for Nursery and Early Childhood Education (Early Years) for children starting at 1 year of age, Elementary School (Elementary School), Middle School (Middle School), and Upper School (High School). The option of half-day, morning, or afternoon classes is available for Early Years classes (Kinder 1, Kinder 2, Kinder 3, and Kinder 4).

1.4. Coree International School has a comprehensive admission procedure for new students and retains the right to make necessary alterations. According to this procedure, the admission of a new family into the school community follows the subsequent steps:

1.4.1. Completion of the Enrollment Application.

1.4.2. An interview with the applicant's family, a school visit, and presentation of the educational proposal.

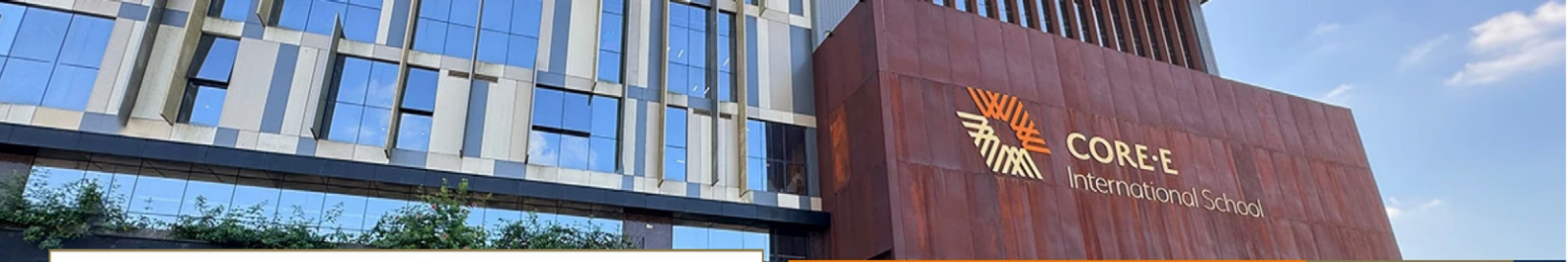
1.4.3. Admission to our school is determined by an evaluation of the student's academic record and admission tests. Depending on the grade level for which the student is applying, the admissions test as well as the academic records can have a significant impact on whether a student will be admitted.

1.4.4. Following the analysis of the academic record and tests, if the student demonstrates the required knowledge for enrollment in the desired grade, the student and family will be eligible to complete the enrollment process.

II. ADMISSION PREFERENCE

2.1. Admission preference at Coree International School will be granted to student applicants in the following order:

2.2.1. Current students.



2.2.2. Siblings of students currently enrolled at Coree International School, provided they have fulfilled all their financial obligations with the school.

2.2.3. Students who have previously completed the admission process steps outlined in section 1.3 and have confirmed their intent to enroll.

III. REENROLLMENT OF CURRENT STUDENTS

3.1. Reenrollment for current students will commence on August 11, 2025, and their spots will be reserved until September 25, 2025, in accordance with the legal requirement to secure spots for 45 days following the publication of this notice. After September 25, 2025, any remaining spots will be opened to new applicants.

3.2. Available slots may be filled by new applicants at any time, provided that all procedures determined by the new student admission policy are followed.

3.3. The reenrollment process for current students will be conducted online. During this process, the financial guardian must log into the system using their username and password. Our team is available to assist with any login issues if needed. The system will prompt the financial guardian to review and update their registration details. If there are any outstanding payments or missing documentation, the system will notify them to contact the school and resolve these matters in order to proceed with the enrollment process.

3.4. The school will also provide a team to guide guardians through the re-enrollment process.

IV. AGE REQUIREMENTS FOR CLASS PLACEMENT

As required by law, the school accepts enrollment in Early Years (Educação Infantil) and 1st grade of Elementary School (Ensino Fundamental) according to the table below.

GRADE	AGE
Kinder 1	For children from 4 months old
Kinder 2	For children who are 2 years old by March 31
Kinder 3	For children who are 3 years old by March 31
Kinder 4	For children who are 4 years old by March 31
Kinder 5	For children who are 5 years old by March 31
Grade 1	For children who are 6 years old by March 31
Kinder 1	For children from 4 months old

V. RE-ENROLLMENT PROCEDURE

5.1. All students who are up to date with their contractual obligations for 2025 will be eligible to renew their enrollment.

5.2. Reenrollment for 2026, conducted before the conclusion of the 2025 academic year, guarantees the student's spot for 2025 only. If, at the end of the academic year, the student is not promoted or if there are outstanding contractual obligations for 2025, the reenrollment process will be automatically canceled.

VI. ENROLLMENT PROCEDURE FOR NEW STUDENTS

The opening of new pre-school classes is subject to a minimum number of registrations. This condition is subject to economic and pedagogical viability criteria established by the institution.

6.1 For new students, the enrollment procedure begins once the steps specified in item 1.3 have been completed.

6.2 If the candidate has received an offer of admission and the guardians wish to proceed with enrollment, the guardian may proceed with the necessary steps, which include:

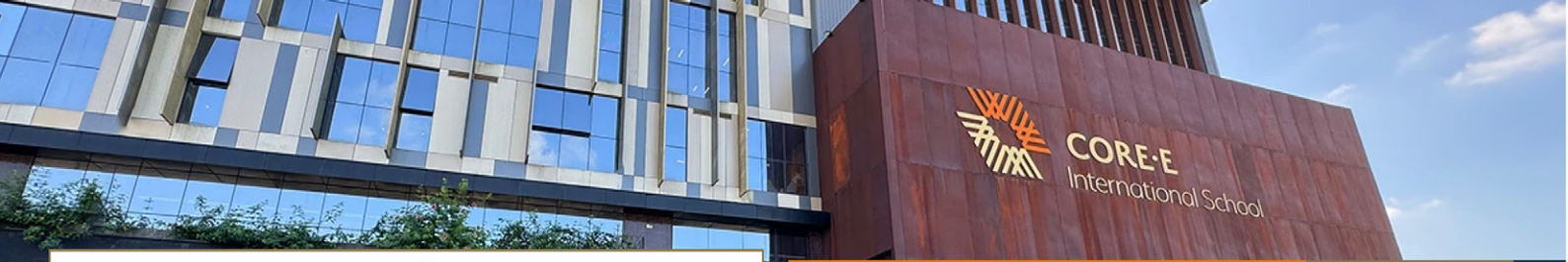
6.2.1. assessment of the payment status of the eldest sibling(s) in the case of sibling enrollment;

6.2.2. Submission of copies of the following documents for Brazilian students:

- Birth Certificate
- RG (Identity Card) and CPF (Tax ID) of the student
- Attendance Declaration or Transfer Certificate from the previous school
- Report Card from the current school
- Elementary School Transcript
- High School Transcript
- Clearance Certificate from the previous school
- RG and CPF of the financial guardian
- Proof of residence of the financial guardian
- Updated vaccination record (Cover of the card with identification and vaccination details)
- Enrollment Application
- Medical Form

6.2.3. Submission of copies of the following documents for foreign students:

- Birth Certificate
- RNM (National Migration Registry) and Passport of the student
- Attendance Declaration or Transfer Certificate from the previous school
- Report Card from the current school
- Elementary School Transcript with Consulate stamp or Hague Apostille
- High School Transcript with Consulate stamp or Hague Apostille



CE-001/2026 – EDITAL DE MATRÍCULAS 2026

- Clearance Certificate from the previous school
- RNM or RG and CPF of the financial guardian
- Proof of residence of the financial guardian
- Updated vaccination record (Cover of the card with identification and vaccination details)
- Enrollment Application
- Medical Form

6.2.4. Contract signature;

6.2.5. Payment of the first installment of the annual fee, to be done at the time of enrollment;

§1. The guarantee of a spot is contingent upon payment of the first installment of the annual fee and the submission of all the documentation as outlined in the specific item.

6.2.6. Documents in a foreign language must be submitted along with their respective certified translation.

6.3 For enrollment applications submitted after 30 days from the start of the academic year, Coree International School retains the right to assess candidate students and may decline admission if it determines that the student is not adequately prepared to join the academic year they are applying for.

VII. SCHEDULES

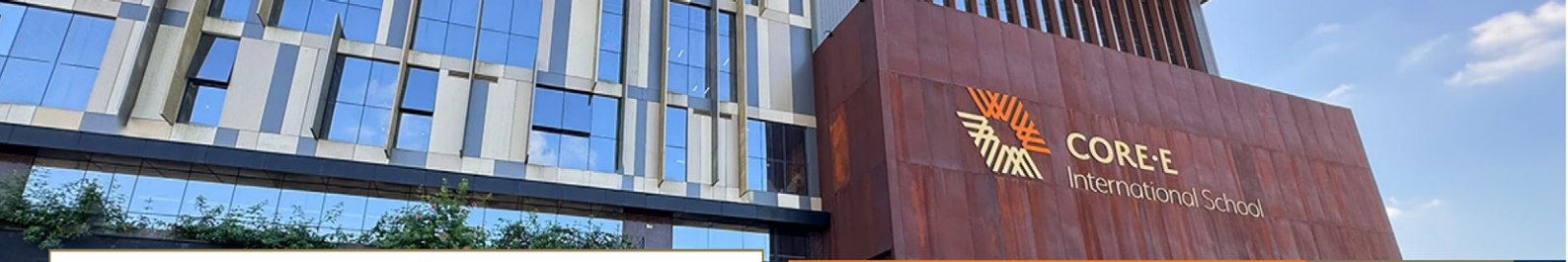
EARLY YEARS

	Arrival time First morning class	1 st morning class	Dismissal/ Lunch	Entry	1 st afternoon class	Dismissal
MORNING	7:20	8:00	12:00	Optional lunch at school Optional afternoons at school		
AFTERNOON				13:30	13:30	17:30
FULL TIME	7:20	8:00	17:30	Optional exit at 17h30		

*Children enrolled in the full-day program have the option to remain at school until 5:30 PM for supervised recreational activities led by the Early Years pedagogical team.

ELEMENTARY, MIDDLE & UPPER SCHOOL

	Arrival time First morning class	1 st class morning	Lunch	1 st afternoon class tarde	Dismissal	Extra Curricular Activities
ELEMENTARY SCHOOL	7:20	8:00	12:05	13:30	16:00	16:30
MIDDLE SCHOOL GRADE 6 - GRADE 8	7:20	8:00	12:05	13:30	16:00	16:30



CE-001/2026 – EDITAL DE MATRÍCULAS 2026

VIII. GENERAL INFORMATION

8.1. Information regarding tuition fees for 2026, the proposed contract, and available spots can be obtained at the school's administration office. Once you access the reenrollment portal, all details about fees and payment slips will be available in RM TOTVS.

8.2. If you are interested in prepaying the tuition, a payment plan will be detailed in the Payment Plan Notice.

8.3. Early Years students have the option to choose between the full-day program until 4:00 PM or 5:30 PM.

8.4. Please note that the annual fee does not cover meal expenses.

8.5. Should the financial guardian wish to settle the full annual payment in advance, it's essential to inform the enrollment department at the time of registration to calculate the early payment discount.

8.6. The sole purpose of this Notice is to provide fundamental information pertaining to the academic planning for the semester.

Coree International School expresses gratitude for your interest in our institution and the trust you've placed in us to nurture your child's education.

Joinville, August 07, 2025.

Liliane Constantini Head of School

Head of School